



## New Integrated Vegetation Management Program to go into effect January 1, 2010

Sevier County Electric System will be implementing a new comprehensive vegetation management program beginning in 2010 to provide safe and reliable service to our community. The new program has two main objectives. They are:

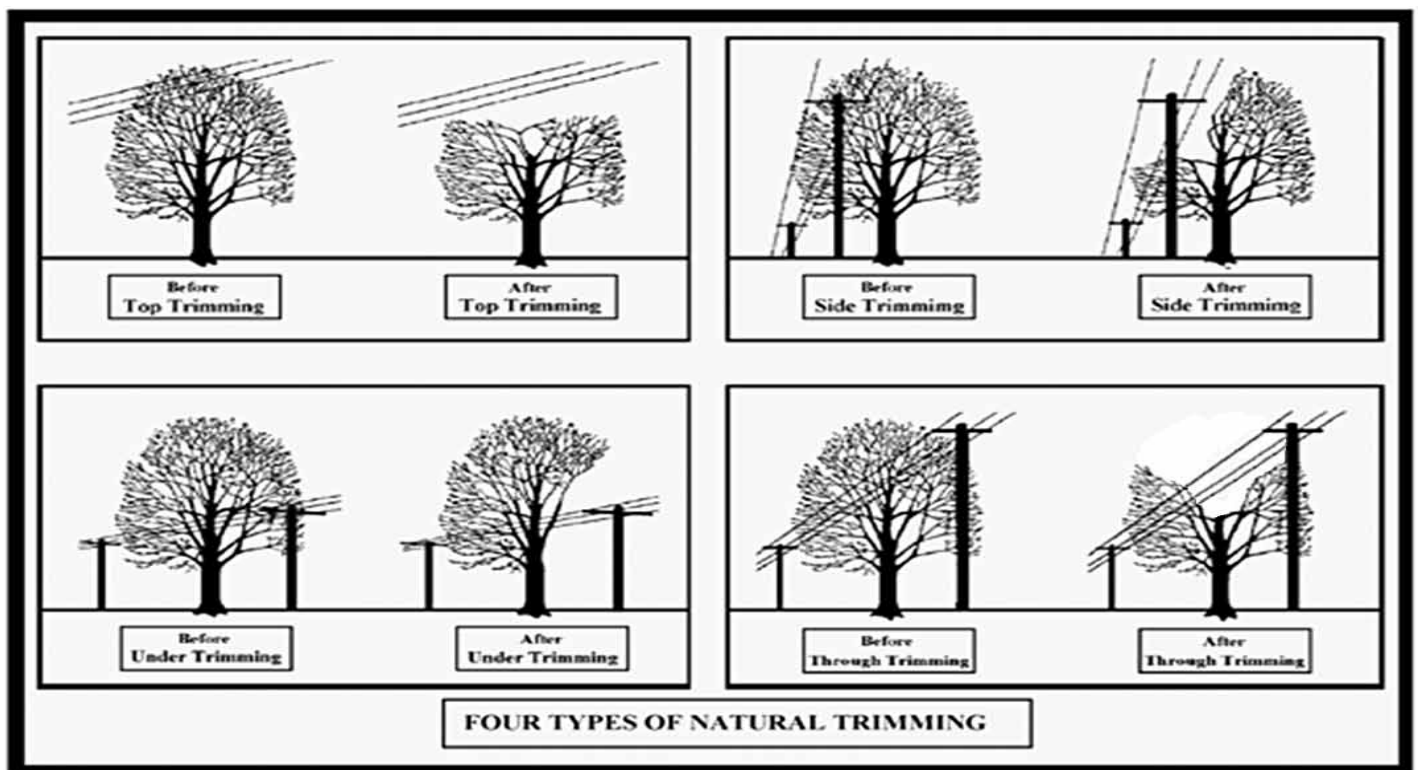
**1. The Establishment of Trim Cycles**

This new program will approach management of all vegetation within rights-of-way of the entire electric system based on 3-year trim cycles for each circuit. Trees and tree limbs growing within the right-of-way will be pruned back to the next appropriate lateral growth at a minimum of 10 feet from existing primary line and/or other energized equipment (including transformers and poles). Service wires will not be trimmed. This will enhance safety of people and property while also improving reliable electrical service throughout our communities. Lateral Trimming will also enable us to better control the direction of new growth therefore reducing the amount of necessary trimming in future cycles.

**2. The Establishment of Tree Line USA**

*The National Arbor Day Society* program recognizes public utilities that utilize responsible arboriculture in their vegetation management programs. This program contains precise and reliable tree care standards and techniques to be used on our valuable trees. All tree trimming techniques to be utilized by SCES are approved by the *The National Arbor Day Society*, *The International Society of Arboriculture*, *The American National Safety Institute*, and others recognized within the utility forestry industry.

SCES also has a tree replacement program (Dogwoods and Redbuds) for valuable lawn trees with rights-of-way that must be removed. For more information regarding our Integrated Vegetation Program, call (865) 774-6274.



# WINTER SAFETY

Keep your family safe and warm this season with these home and vehicle safety tips.

## HOME SAFETY

- Put a safety kit in an accessible place that includes extra non-perishable food and a manual can opener, a few days' supply of water, medicine, a first aid kit, special needs items (e.g., diapers), a battery operated radio, a flashlight, extra batteries, candles and matches, snow shovel and rock salt.
- Never use your range or oven to heat your home, even for a short time.
- Keep space heaters three feet from flammable items. Always keep children and pets away from space heaters.
- If using kerosene heaters, ensure adequate ventilation to reduce carbon monoxide build-up in the room. Before refueling, turn it off and let it cool down. Refuel outside only. Never use gasoline-it could explode.
- Inspect fireplace chimneys and flues yearly. When using the fireplace, open the flue and use a screen. Burn only untreated wood and never paper or pine branches as embers can ignite your roof, a neighbors roof or nearby trees.
- If using a wood burning stove, check the chimney connection and flue yearly. Use an approved stove board to protect the floor from heat and coals.

## VEHICLE SAFETY

- Winterize your car. Have your car tuned up, check tire tread, check the level of antifreeze, make sure the battery is good and that your heater and defroster work properly. Always keep your tank more than half full to avoid frozen gas lines.
- Put a safety kit in your vehicle. Include warning devices, a flashlight with spare batteries, blankets, extra clothing, drinking water, medicines and other first aid supplies, a compass, small shovel, tow rope, jumper cables, and a good ice scraper.
- Before traveling, check the latest forecast and road conditions and tell someone where you are going and when you expect to arrive. Avoid traveling during storms.
- If you become stranded, stay in your vehicle and run the engine at 10-minute intervals for heat. Maintain proper ventilation by making sure the exhaust pipe is not plugged and opening the windows slightly to avoid carbon monoxide poisoning. Use hazard lights and warning devices.

## January is National Radon Action Month

**Radon is the 2nd leading cause for Lung Cancer: Call for free test kit 1-800-232-1139**

Living "GREEN" is about more than just energy efficiency and recycling. It's also about giving your family a healthier home. Breathing "GREENER" air means checking your home for radon, a leading indoor air problem that is the second leading cause of lung cancer. Breathing in high levels of radon indoors can lead to lung cancer yet it is easily preventable. A simple home radon test can tell you if you have a problem. If your home does have a high radon level, there are simple ways to reduce this radioactive gas and make your home's air safer.

The Tennessee Department of Environment and Conservation, Office of Environmental Assistance—Radon Program is offering a limited amount of free radon test kits to Tennessee citizens. Please email your request to

[TDEC.Radon@tn.gov](mailto:TDEC.Radon@tn.gov) or mail your request to:

Radon Program  
711 R.S. Gass Blvd  
Nashville, TN 37216

Please be sure to include your name, address, city, state, and zip code.

## Comfort, Quality, & Energy Efficiency

Whether it's snowing outside or a hundred degrees in the shade, enjoying the benefits of an electric heat pump is now easier than ever thanks to the Quality Contractor Network (QCN), established by Sevier County Electric System and TVA. Heat pumps are an economical way of heating or cooling your home but to maximize their benefit, they need to be installed properly. The QCN ensures just that.

Sevier County Electric System will provide you a list of the contractors who will give you a free estimate. SCES also offers financing at 8% interest for up to 10 years and the payments are included on your monthly electric bill.

You will now cool for less. Heat for less. And now, take a deep breath, pay less.



### REQUIREMENTS

- QCN contractor only
- Customer must own the property
- Customer must be approved with credit check.



## Get off the billing Roller Coaster Try Our Levelized Pay Plan



Now, there's a way to guard against large fluctuations in your monthly electric bill...without ever having to play "catch-up" at year's end. It's called Levelized Billing and it's designed to keep your electric bills affordable every month as long as you remain on the plan. It's the ideal way to accurately anticipate your monthly electric bill.

Levelized Billing makes your electric bill predictable. Your monthly electric bill is a rolling average of your electric usage for the past 12 months, plus 1/12 of any difference between leveled bills and actual bills.

For instance, this month's bill would be the average electric usage of the previous 11 months and this current month plus 1/12 of any difference between actual and levelized billing.

Because Levelized Billing uses a rolling average, your monthly bill will vary slightly each month. But because changes in usage are averaged in over a 12-month period, there is never a really big bite in the very cold or hot months when usage may be high.

The only time you have to reconcile is when you decide to leave SCES or no longer want to participate.

### Levelized Billing Qualifications

1. You must be an SCES customer for 12 months @ same location
2. You must have an acceptable pay history.
3. Once on the Levelized Billing plan, you must keep your account current
4. You must sign up for Automatic Bank Draft

## Project Round Up

### A Little Change Makes A Lot of Difference

Giving back to our community is a very important part of Sevier County Electric System's business philosophy, and we believe that our customers share this ideal. Project Round Up is one of the easiest ways we can all help members of our community, and it costs less than a dollar a month.

Project Round Up helps customers in our community by providing electric service in times of hardship. Sevier County Electric System's customers contribute to the program by volunteering to have their monthly electric bills rounded up to the next whole dollar. Individual contributions never amount to more than 99 cents each month. The total would not exceed \$12.00 a year. Put this small change together and it makes a lot of difference to our community.



# MAKE THE NEXT WATER HEATER YOU PURCHASE YOUR LAST



# Marathon®

## Construction Features

- Energy Saving Pipe Wrap Kit - reduces heat loss through plumbing lines.
- Temperature and Pressure Relief Valve - factory installed.
- Watertight Grommets - keep out overhead moisture and condensation.
- Seamless Molded Non-metallic Inner Tank - can't rust or corrode.
- Fill Tube - high temperature material to withstand thermal storage and other high temperature applications.
- High-tech Heating Elements - upper element fused to protect tank against "dry fire." Bottom element is low-watt density, stainless alloy for long life.
- Polyethylene Outer Jacket - resists dents and scratches during transit, installation and beyond.
- Envirofoam® - a great energy saver and friendly to the ozone layer—it's made without CFCs and HCFCs.
- Filament-wound Fiberglass Tank - has unmatched strength.
- Recessed Drain Valve - protected from damage.



The Marathon water heater has a long list of features that help homeowners win the race in the long run, including:

- Lifetime guarantee, so you'll never have to buy a new one: guaranteed not to leak for as long as you own your home
- The most energy-efficient water heater you can buy, with long term savings: the increased energy efficiency of your Marathon will cut your bill \$5-\$6 each month
- Protects your investment with special temperature and pressure relief valves and a seamless tank that won't rust or corrode and resists dents and scratches
- Pipe Wrap Energy Kit reduces heat loss from plumbing lines and features environmentally friendly insulation
- Receive a \$120 credit toward your electric bill