

the Powerline

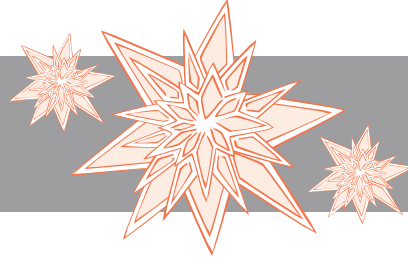
Sevier County Electric System's Quarterly Newsletter
Winter 2011



SEVIER COUNTY
ELECTRIC SYSTEM
The power behind our community

Cold weather is here.

Find energy-saving tips, products, and programs to keep safe and warm in this issue of **The Powerline**.



It's the little things Take a minute to look around your house. Do you see wasted energy? The following simple tips could keep you warmer **and save you money.**

- Set thermostat to 68 in the winter. Each degree above 68 will increase heating cost by 3%.
- Have a programmable thermostat installed.
- Change air filters monthly.
- Keep all vents and returns open for adequate air flow.
- Keep outside air unit clean and free of debris.
- Have your ductwork inspected and repair any leaks.
- Insulate your outlets.
- Make sure your dryer vent seals tightly when not in use.
- Turn off your water heater if you're going to be out of town for an extended period of time.
- Set water heater temperature to 120.
- Install glass doors on your fireplace and keep the damper closed when fireplace is not in use.
- Keep garage doors closed and consider installing insulated doors.
- Switch to compact fluorescent light bulbs and save up to 75% over incandescent bulbs.
- Keep curtains open on the south side of the house and closed on the north side during the day to help keep warm.
- Use area rugs if you have hardwood or tile floors to keep your feet warm.
- Perform your own home energy audit online at www.energyright.com.



Winter Safety Winter presents many safety challenges—both indoors and out. **Keep your family safe this season with these home and vehicle safety tips.**

- Keep a safety kit in an accessible place that includes non-perishable food, manual can opener, water, meds, first aid kit, battery operated radio, flashlight, extra batteries, candles, matches, and any special needs items.
- Keep space heaters three feet away from flammable items.
- Take care with kerosene. Use only in well-ventilated areas and refuel outside only.
- Inspect any chimneys, flues, and connections for all fireplaces and wood-burning stoves yearly.
- Never use your range or oven to heat your home.
- Winterize your car. Check antifreeze levels, battery strength, and heater.
- Keep a safety kit in your vehicle that includes flashlight, spare batteries, blankets, extra clothing, water, meds, first aid, jumper cables, ice scraper, tow rope, etc.
- Be aware of the forecast. Avoid traveling during storms.
- If you become stranded, turn on your hazard lights and stay in your vehicle. Run the engine at 10-min intervals for heat. Maintain proper ventilation.
- Let someone know your plans.

power
action line

865-774-6300

A Friendly Voice When the Lights Go Out

Winter weather can bring unexpected power outages. Call 865-774-6300 if you experience a power outage. Using our automated system is the most efficient way to have your power restored.

The Warmth of a Fireplace. The Ease of Electric.

**Financing
Available!**



A Dimplex electric fireplace combines traditional fireside comfort and warmth with convenience and savings. SCES offers all-electric fireplaces that give you the beauty of the real thing without the mess, danger or expense of wood-burning fireplaces. In addition, the electric fireplace is available in a variety of styles, plugs into any standard 120-volt wall outlet and costs just pennies a day to operate.

Models that are easily installed in existing fireplace openings are also available. Operate the fireplace from anywhere in the room with the remote control. The flame and heater are completely adjustable and operate independently so you can enjoy attractive flames without the heat year-round. The unit's light bulbs, which are available at any hardware store, will need to be replaced every 2-3 years, but that's all the maintenance that is required.

SCES has several displays set up throughout the lobby. SCES also offers financing that can be added directly to your electric bill. Stop by our office to experience the warmth and beauty of an all-electric fireplace.

For more information

contact Lucas Harkleroad at (865) 774-6264.

Did you know that you can visit SCES online at www.sevces.org? Our website answers many of your frequently asked questions plus details such additional products/services as:

- Energy Right New Homes
- Online Energy Evaluation
- Marathon Water Heaters
- Tesco Surge Protectors
- Green Power Switch
- Outdoor Lighting
- Bank Draft
- Credit Card Payments
- Vegetation Management
- New Construction
- Emergency Services

Comfort, Quality, & Energy Efficiency

Whether it's snowing outside or a hundred degrees in the shade, enjoying the benefits of an electric heat pump is now easier than ever thanks to the **Quality Contractor Network (QCN)**, established by Sevier County Electric System and TVA. Heat pumps are an economical way of heating or cooling your home, but to maximize their benefit, they need to be installed properly. The QCN ensures just that.

Sevier County Electric System will provide you a list of the contractors who will give you a **free estimate**. SCES also offers **low-rate financing for up to 10 years** and the payments are included on your monthly electric bill.

You will now cool for *less*. Heat for *less*. And now, take a deep breath, pay *less*.



REQUIREMENTS

- QCN contractor only
- Customer must own the property
- Customer must be approved with credit check.

**Financing
Available!**



Get off the billing Roller Coaster *Try Our Levelized Pay Plan*

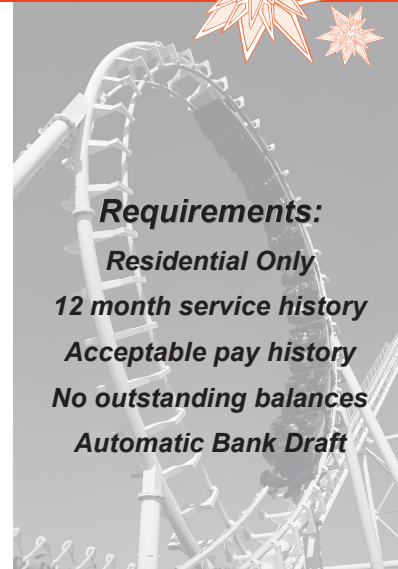
Winter heating bills can be unpredictable. Now there's a way to guard against large fluctuations in your monthly electric bill...without ever having to play "catch-up" at year's end. It's called **Levelized Billing**, and it's designed to keep your electric bills affordable every month as long as you remain on the plan. It's the ideal way to accurately anticipate your monthly electric bill.

Levelized Billing makes your electric bill predictable. Your monthly electric bill is a rolling average of your electric usage for the past 12 months, plus 1/12 of any difference between leveled bills and actual bills.

Since **Levelized Billing** uses a rolling average, your monthly bill will vary slightly each month. And since changes in usage are averaged in over a 12-month period, there is never a really big bite in the very cold or hot months when usage may be high.

The only time you have to reconcile is when you decide to leave SCES or no longer want to participate.

Call (865)453-2887 today to enroll



Requirements:

Residential Only

12 month service history

Acceptable pay history

No outstanding balances

Automatic Bank Draft

News from Vegetation Management

Clearing the Path in 2011

As part of SCES's mission to provide safe and reliable electricity to our customers, SCES plans to trim approx. 500 miles of distribution line in 2011. Properly trimmed trees are less susceptible to disease and insect problems making them stronger, healthier and more resistant to high winds.

And Keeping the Lights On

After a storm, SCES crews must work quickly to remove downed wire hazards and restore electricity to all customers. Many times crews must cut broken or uprooted trees to access and repair damaged lines. In such emergencies, **SCES will not remove the storm-related debris.** Customers are advised to contact their local Dept of Public Works, trash collector, or a professional tree-removal company for advice on disposing of debris.

Did you know?

Strategically placed trees can reduce heating/cooling costs by 15-35%. Visit www.sevces.org to learn how, plus find information on Right Tree in the Right Place, trimming guidelines, and many other FAQ about Vegetation Management.

For more information about Trimming and Vegetation Mgmt, call (865) 774-6274 or visit www.sevces.org

Project Round Up *A Little Change Makes A Lot of Difference*



Giving back to our community is a very important part of Sevier County Electric System's business philosophy, and we believe that our customers share this ideal. **Project Round Up** is one of the easiest ways we can all help members of our community, and it costs less than a dollar a month.

Project Round Up helps customers in our community by providing electric service in times of hardship. Sevier County Electric System's customers contribute to the program by volunteering to have their monthly electric bills rounded up to the next whole dollar.

Individual contributions never amount to more than 99 cents each month, so the total would not exceed \$12.00 a year. Plus, it makes balancing your checkbook a breeze! When we all put this small change together, it makes a lot of difference to our community.

Call (865)453-2887 today to enroll

Purchase a Marathon Water Heater.
Get \$120.00 credit on you next electric bill.

**Financing
Available!**



Marathon®

Construction Features

- Energy Saving Pipe Wrap Kit - reduces heat loss through plumbing lines.
- Temperature and Pressure Relief Valve - factory installed.
- Watertight Grommets - keep out overhead moisture and condensation.
- Seamless Molded Non-metallic Inner Tank - can't rust or corrode.
- Fill Tube - high temperature material to withstand thermal storage and other high temperature applications.
- High-tech Heating Elements - upper element fused to protect tank against "dry fire." Bottom element is low-watt density, stainless alloy for long life.
- Polyethylene Outer Jacket - resists dents and scratches during transit, installation and beyond.
- Envirofoam® - a great energy saver and friendly to the ozone layer—it's made without CFCs and HCFCs.
- Filament-wound Fiberglass Tank - has unmatched strength.
- Recessed Drain Valve - protected from damage.



The **Marathon** water heater has a long list of features that help homeowners win the race in the long run, including :

- Lifetime guarantee, so you'll never have to buy a new one: guaranteed not to leak for as long as you own your home
- The most energy-efficient water heater you can buy, with long term savings: the increased energy efficiency of your Marathon will cut your bill \$5-\$6 each month
- Pipe Wrap Energy Kit reduces heat loss from plumbing lines and features environmentally friendly insulation
- Protects your investment with special temperature and pressure relief valves and a seamless tank that won't rust or corrode and resists dents and scratches

SCES has Marathon water heaters on display in our office and short-term financing is available.

Contact Lucas Harkleroad at (865) 774-6264 for more information.